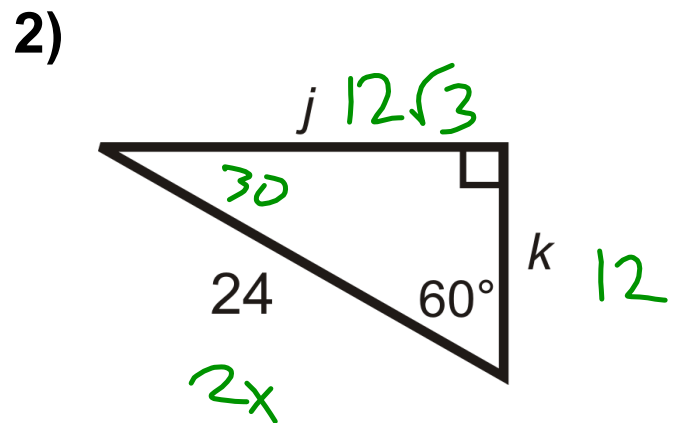
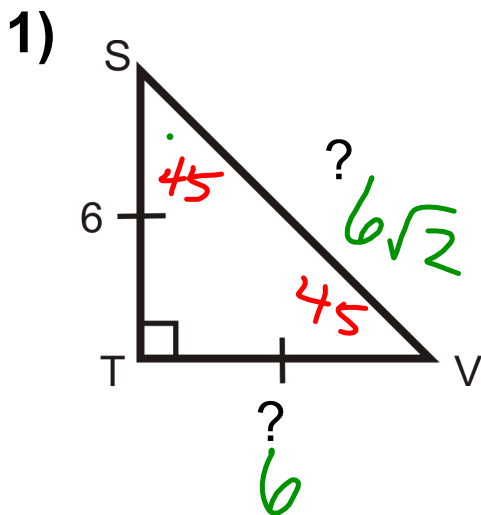


Warm Up

Find the missing sides.

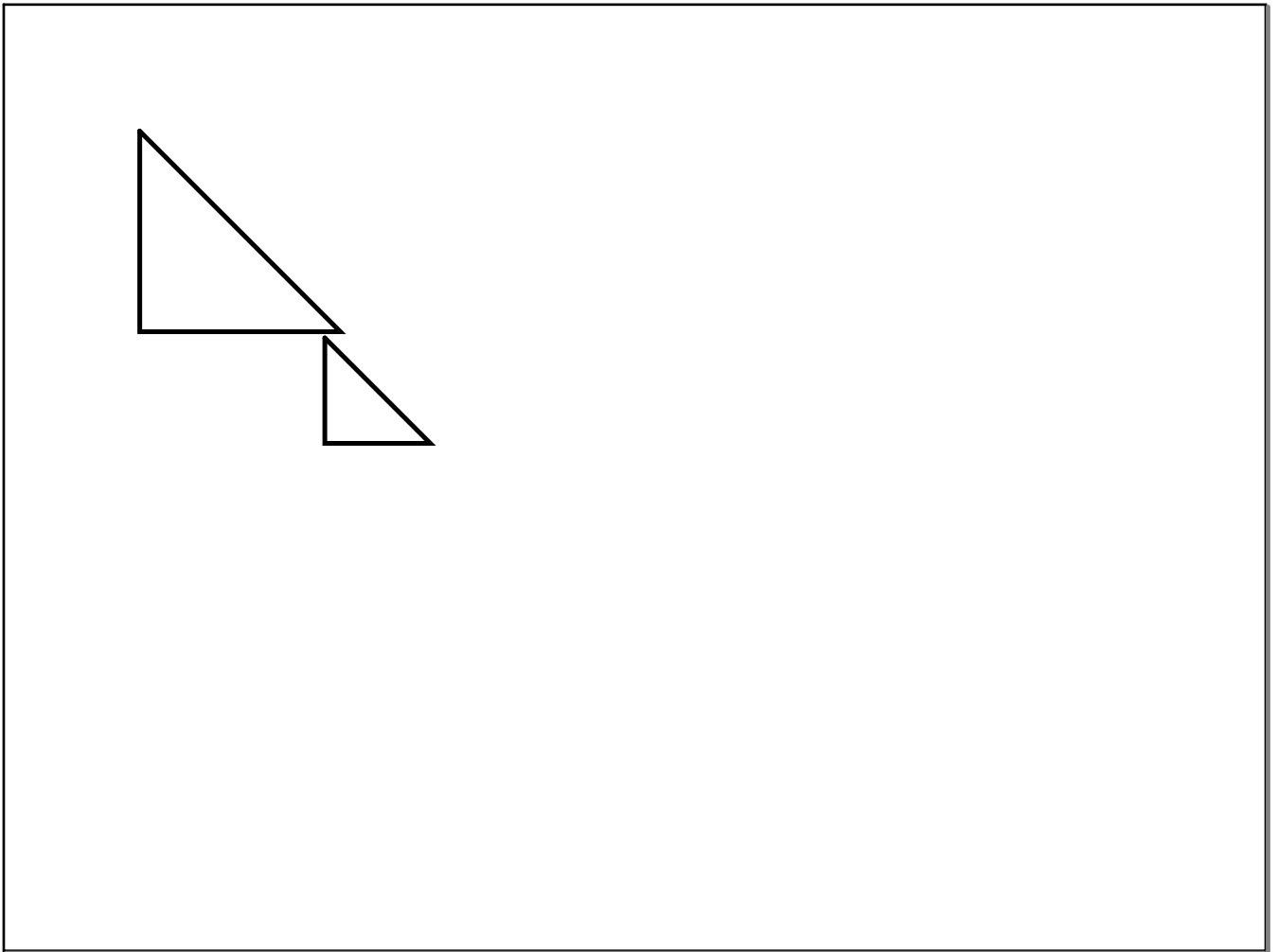


Introduction to Trigonometry

Intro to Trig video



Index cards are needed!!!

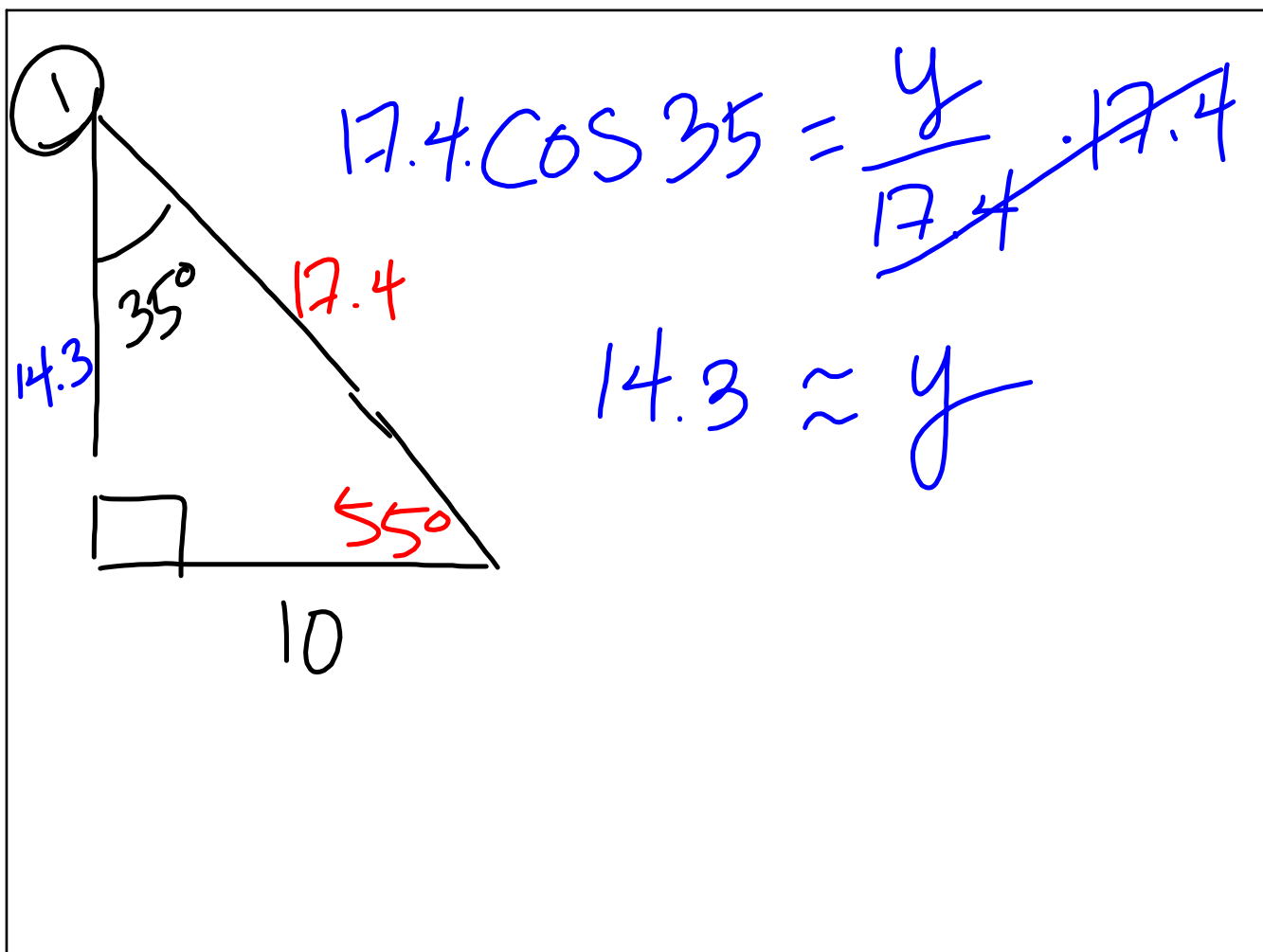


$\sin \theta = \frac{\text{opposite}}{\text{hypotenuse}}$

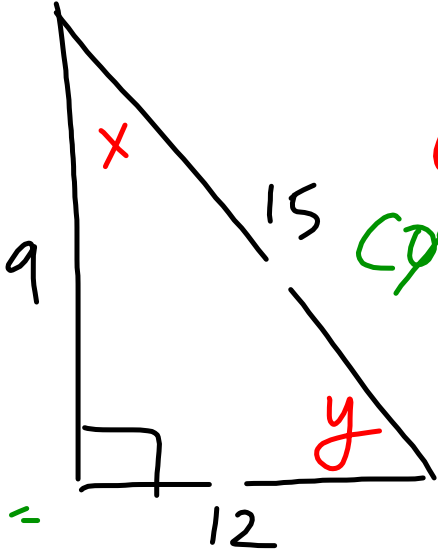
$\cos \theta = \frac{\text{adjacent}}{\text{hypotenuse}}$

$\tan \theta = \frac{\text{opposite}}{\text{adjacent}}$

SOH - CAH - TOA



②



$\cos X = \frac{6}{13}$

\cos^{-1}

$X = \cos^{-1}\left(\frac{6}{13}\right)$

$X = 62.5^\circ$

$f(x) =$

$y =$

Classwork: Geo Joke worksheets :)

Homework: p. 426 #5 - 7, 11