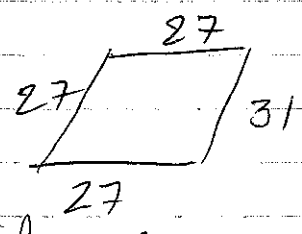


Q. 258 #2, 3, 5, 6, 8, 10, 11, 13

2. $2x + 5 = 4x - 17$
 $22 = 2x$
 $x = 11$



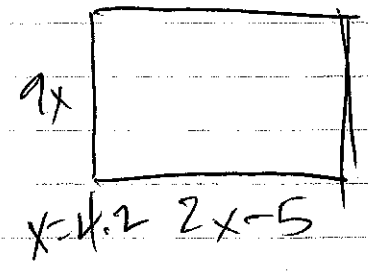
∴ Not all sides \cong

3. $2x + 6 + 42 = 90$
 $2x = 42$
 $x = 21$

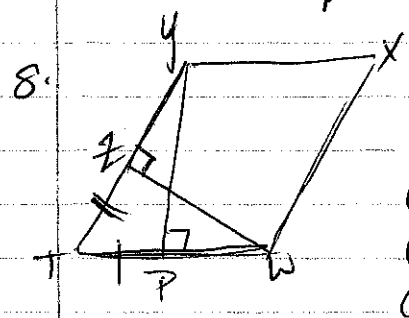
5a. $9x(2x - 5) \rightarrow 18x^2 - 45x$

b. $2(9x) + 2(2x - 5) \rightarrow 18x + 4x - 10 \rightarrow 22x - 10$

c.
 $A = 18(4.2)^2 - 45(4.2) = 128.5$
 $P = 22(4.2) - 10 = 82.4$



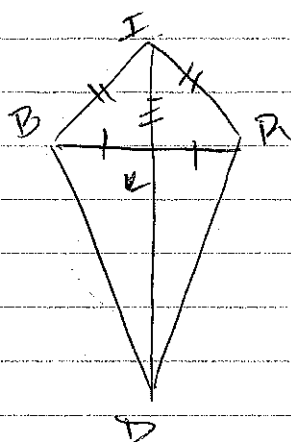
- 6. a. Rhombus
- b. Square
- c. Rectangle
- d. Isoscl. Trapezoid



- ① $YTWX$ is a \square
- ② $\overline{TP} \perp \overline{TW}$
- ③ $\overline{TP} \perp \overline{TY}$
- ④ $\overline{TP} \cong \overline{TP}$
- ⑤ $\angle Y \cong \angle X$
- ⑥ $\triangle TWY \cong \triangle TPY$
- ⑦ $\overline{TY} \cong \overline{TW}$
- ⑧ $TYWX$ is a rhombus

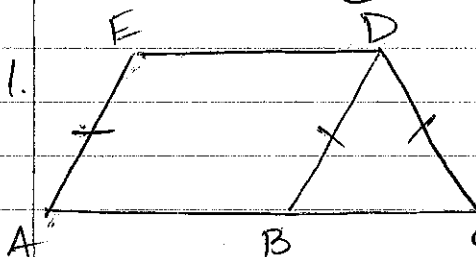
S	R
①	Given
②	Given
③	Given
④	Given
⑤	Reflexive Prop.
⑥	ASA
⑦	CPCTC
⑧	Consecutive sides \cong

10.



S	R
① \overline{ID} bis \overline{BD}	① Given
② $\overline{BI} \cong \overline{IR}$	② Given
③ $\overline{BK} \cong \overline{KR}$	③ Def. of bis
④ $\overline{IK} \cong \overline{IK}$	④ Reflexive Prop.
⑤ $\triangle BIK \cong \triangle RIK$	⑤ SSS
⑥ $\overline{BI} \cong \overline{IR}$	⑥ CPCTC
⑦ $\angle BIK \cong \angle RIK$	⑦ CPCTC
⑧ $\overline{ID} \cong \overline{ID}$	⑧ Reflexive Prop.
⑨ $\triangle BID \cong \triangle RID$	⑨ SAS
⑩ $\overline{BD} \cong \overline{RD}$	⑩ CPCTC
⑪ BIRD is a kite	⑪ 2 pairs of consecutive sides \cong ($\overline{BI} \cong \overline{IR}, \overline{BD} \cong \overline{DR}$)

11.



S	R
① ABDE is a \square	① OG
② $\triangle ABD$ is isosc.	②
③ $\overline{BD} \cong \overline{DC}$	③ Def. of Isosc.
④ $\overline{AE} \cong \overline{BD}$	④ \square has opp sides \cong .
⑤ $\overline{AE} \cong \overline{CD}$	⑤ Transitive Prop.
⑥ ACDE is an isosc. trapezoid	⑥ Non parallel sides are \cong .

13. a. parallelogram
 b. Trapezoid
 c. Isos. Trap.
 d. Rectangle
 e. Rectangle
 f. Rhombus
 g. Kite

h. quadrilateral