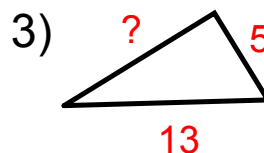
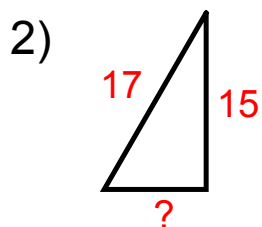
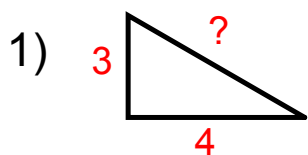


Advanced Geometry Warm Up

Find the missing sides of the right triangles.



Pythagorean Triples

Pythagorean Theorem Triples

(3, 4, 5)

(8, 15, 17)

(12, 35, 37)

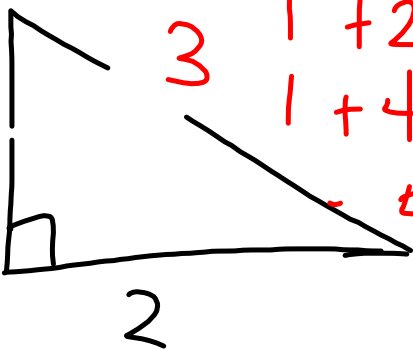
(5, 12, 13)

(9, 40, 41)

(20, 21, 29)

(7, 24, 25)

(11, 60, 61)



$$1^2 + 2^2 = 3^2$$

$$1 + 4 = 9$$

$$= 5 \neq 9$$

Index card

Common Families: Pythagorean Triples

*Place your card in the correct family
on the whiteboard with a magnet.*

Homework:

p. 401 #1 - 5 (a, b, c), 6 - 10

#9



see p. 399

EXIT SLIP

1) Find the missing side:

2) Which family did you use?

